

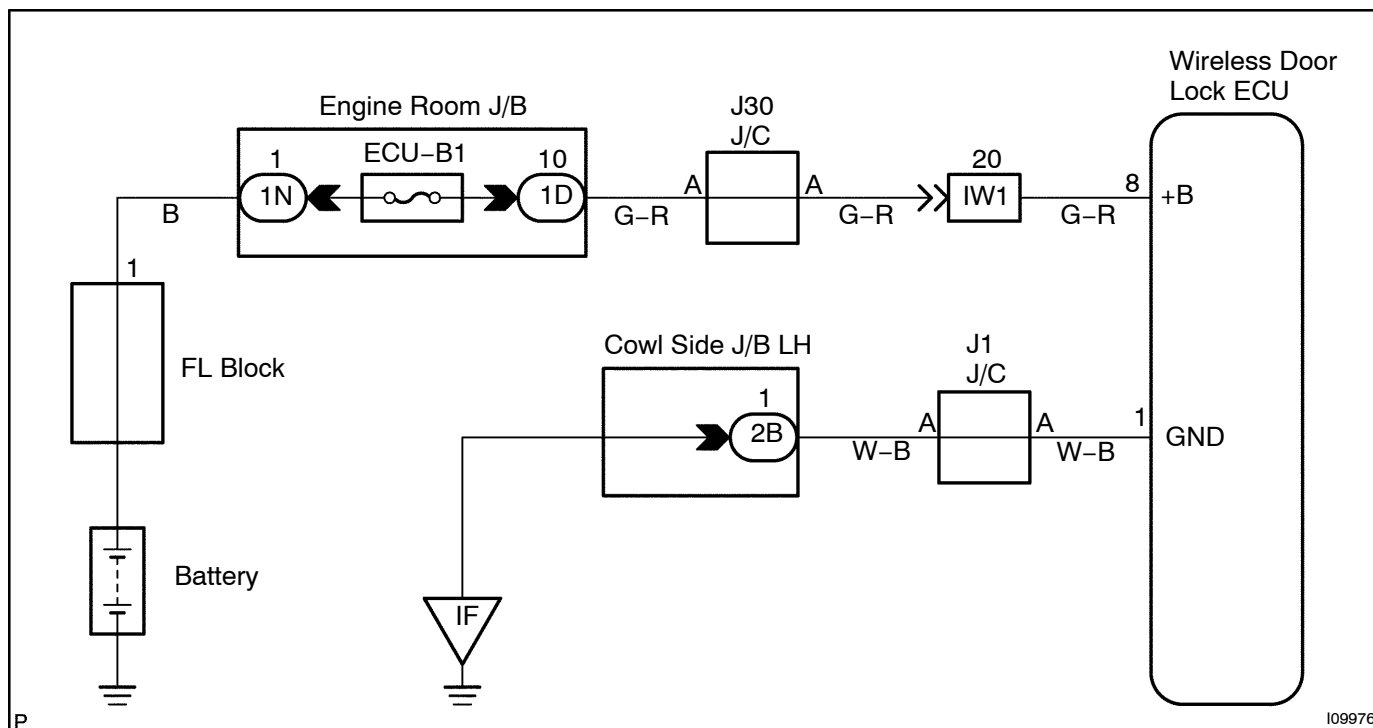
CIRCUIT INSPECTION

ECU Power Source Circuit

CIRCUIT DESCRIPTION

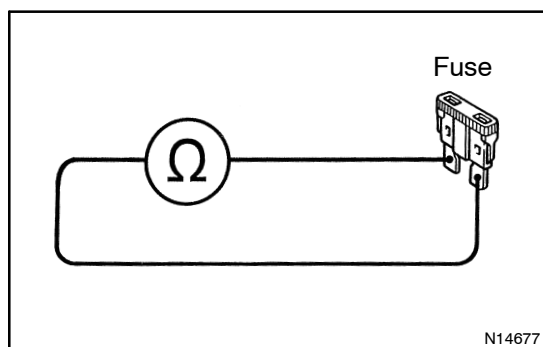
Battery positive voltage is always applied to the terminal +B of the wireless door lock ECU.

WIRING DIAGRAM



INSPECTION PROCEDURE

- 1 Check DOME fuse.



PREPARATION:

Remove DOME fuse from engine room junction block.

CHECK:

Check continuity of DOME fuse.

OK:

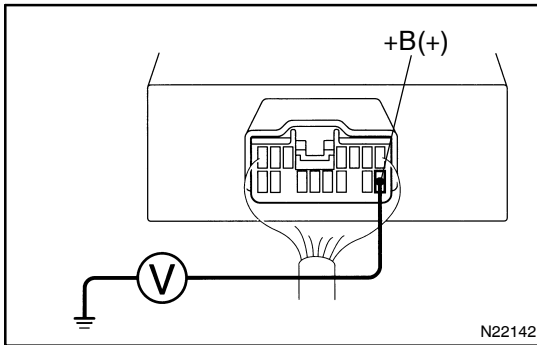
Below 1.0 Ω or continuity

NG

Check for short in all the harness and components connected to DOME fuse.
(See attached wiring diagram.)

OK

2 Check voltage between terminal +B of ECU connector and ground.



PREPARATION:

Remove the wireless door lock ECU from No.1 instrument panel brace.

CHECK:

Measure voltage between terminal +B of ECU connector and ground.

OK:

Voltage: 10 – 14 V

OK

Proceed to next circuit inspection shown in problem symptom table (See page [DI-597](#)).

NG

3 Check for open in harness and connector between terminal GND of ECU and body ground (See page [IN-33](#)).

NG

Repair or replace harness or connector.

OK

Check and repair harness and connector between ECU and battery.